



PRESS KIT

Sun Odyssey
440

NEW



- MAIN SPECIFICATIONS
- SAILS PLAN
- FACTORY EXTRAS
- CHARTER INVENTORY

Built Year: 2019

January 2024



www.zeilonyachts.com

'Finesse'

New JEANNEAU Sun Odyssey 440 - 4 Cabins, 2 Heads Layout - Built Year: 2019

Name: **Finesse** - Home Port: **Piraeus**



MAIN SPECIFICATIONS

Full Battened Main Sail (3 reef points) / Short Overlapping Furling Genoa (110%) - non self-tacking

Overall length with bowsprit: 13,39 m / 43' 11"

Overall length : 13,00 m / 42' 7"

Hull Length : 12,64 m / 41' 5"

Waterline length : 12,00 m / 29' 4"

Beam : 4,29 m / 14'

Draft : 2,20 m / 7' 2"

Keel : Fin

Displacement : 8.561 Kg / 18.874 lbs

Water tanks : 530 l / 140 US gal

Fuel capacity : 200 l / 53 US gal

Sail area : 91 m² / 972 Sq ft

Cabins : 4

Berths : 8

Heads with showers : 2

Engine Power : Yanmar 57 Hp / 42 kW

Drive : Shaft drive

Fuel Type : Diesel

Steering : Twin rudders with JEFA roller bearings

CE Category : A

Headroom: Forward Cabins (1,90m/6'2"), Aft Cabins (1,88m/6'2"), Saloon (1,97m/6'5"), Galley (1,95m/6'4") Heads (1,90m/6'2").

SPECIFICATIONS

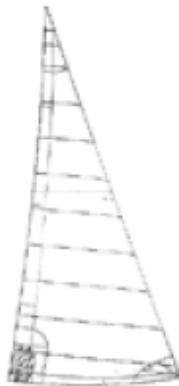
FULL BATTENED MAINSAIL:

- Dacron®
- Horizontal panels
- Stainless steel eyes
- UV-stabilised thread
- Draft stripe
- Radial reinforcements
- Adjustable leech line
- Loose-footed
- 3 reef points each with singleline reefing system
- **Area: 45,15 m² (485,99 Sq ft)**



SHORT OVERLAPPING FURLING GENOA (110%):

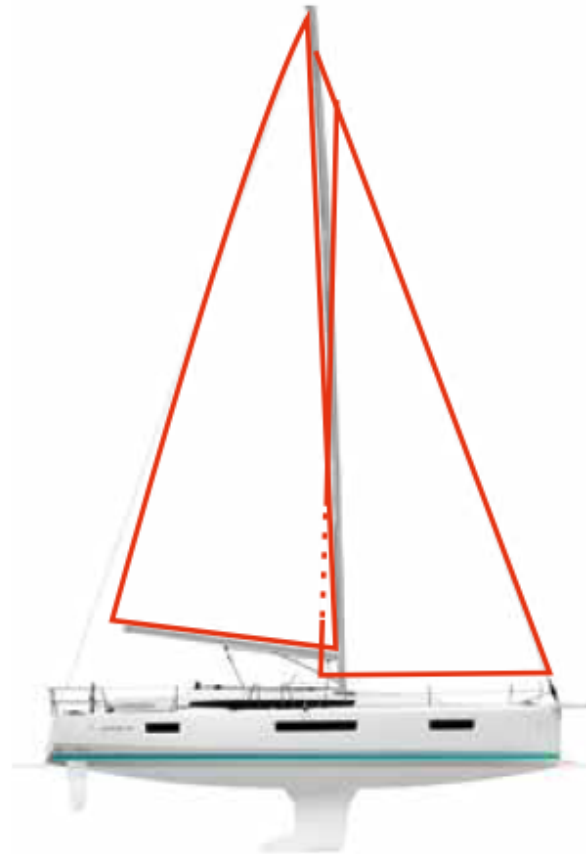
- Dacron®
- Horizontal panels
- UV-stabilised thread
- Webbing strap at head
- Bolt-rope for furler
- Anti-UV protection on foot and leech
- Draft stripe
- Webbing strap at tack
- Reefing marks
- Adjustable leech line
- **Area: 45,15 m² (485,99 Sq ft)**



BENEFITS

- High-aspect rig for maximum performance
- Easy to handle sail plan
- Versatile and balanced sail plan at all sailing angles

I = 15,30 m / 50'2"
J = 5,17 m / 17'
P = 15,30 m / 50'2"
E = 5,05 m / 16'7"



INVENTORY SO 440: *Finesse*

SPECIAL EQUIPMENT

Retractable Bow Thruster, Extending coamings convertible into lounging area and sundeck, Cushions for cockpit and sundeck, Teak cockpit floor, Teak side decks, Teak cockpit table, Solar panels 270W (2x135W), Second windlass control with chain counter in the cockpit, Extra 35L fridge/freezer in galley, Interior woodwork in ALPI® Grey Cedar, Saloon upholstery Ambiance Turquoise, Multi-function Cockpit Table, Convertible berth in saloon, Fans in the saloon & cabins, Shades and screens for all hatches, 12V/Twin USB Sockets in all cabins & saloon.

SAFETY

EPIRB, GMDSS, VHF, Inflatable Life Raft, ISO 9650-1 <24h, (10persons in Canister), Automatic Inflatable Life Jackets 165N with crotch strap and stainless steel D-ring (10xAdults & 2xJuniors 150N), Safety Harnesses with 2 hooks (10xadults, 2xjuniors), Life lines (port & starboard), First aid Kit, Fire extinguishers, Distress Flares kit, Horse Shoe Buoy with 30m floating line and Floating Light, MOB Lifeline Sling with 30m floating line, Emergency Tiller, Radar reflector, Fog horn, Wire (rigging) cutter, Bosun's Chair, Spare navigation Lights, 2xTorches.

NAVIGATION

Autopilot, GPS-Charts Plotter with Navionics, Windex, Depth/Speed/Wind Instrument, Cockpit Control Panel, Main Compass, Binoculars, Hand Bearing Compass, Charts for Internal & Harbor Waters, Greek waters Pilot book, Clock, Barometer, Divider & Navigation Rule, Log.

MISCELLANEOUS

Electric Windlass Lofrans 1500W, Swimming platform & Ladder, Dinghy 2.50m with air floor, Outboard Engine, Oars, Bimini, Sprayhood, Electric winch on coach roof (port side) NESPRESSO Pixie Coffee Machine, Carbon Fiber Foldable Gangway, Radio-MP3 Player, Cockpit Speakers, LED courtesy lighting in the cockpit, Navicolor battery monitoring, Mid ship cleats, Lazy bag & Lazy-Jacks, LED lighting in cabins & saloon, shades for windows and ports, 2 burner stove with oven and grill, Hot Water, 2x50lt Holding Tanks, 220V Sockets in all cabins & saloon, Battery Charger, Shore Power Cable 25m & Adapters, Deck Shower with hot/cold water, Electric Bilge Pump, Electric Fridge, Bed-linen, Towels, Cutlery & Crockery, Gas Bottle, Fenders, Tools & Spares, MANTUS M2, 20kg anchor & 100m chain with color markers, Mooring lines 16mm (4x15m, 2x25m, 2x50m), Preventer lines 12mm (2x12m), MANTUS 10kg Stern Anchor & 40m anchor line with lead, Buckets, Jerry cans, Snorkel gear, etc.

JEANNEAU FACTORY OPTIONS/EXTRAS FOR SO 440: *Finesse*

- **HIGH TRANSPARENCY SPRAYHOOD (DODGER) SUNBRELLA PLUS WITH LED LIGHTING – Colour TAUPE**



2 stainless steel roll bars Ø 25 mm.
Tension by struts equipped with turnbuckles.
Fixing on the bridge by aluminum rail.
1 canvas with high vision glazing, interior storage pockets, 1 roof window, 2 soft handrails.
1 strip leds on the back sheath.
1 pair of removable cheeks to facilitate access to the passavants.
Height from the bottom of the cockpit: 1.90m.



Colour: TAUPE

- **Interior woodwork ALPI® Grey Cedar**
- **Upholstery Ambiance TURQUOISE**



Alpi® grey Cedar



- **Extended Coamings convertible into lounging area**

A truly exclusive feature. The tall, protective coamings can open out to form a large and accommodating lounging area.



Starboard infill cushion for L-seating area -
Taupe



CONVERTIBLE COCKPIT PACKAGE TAUPE

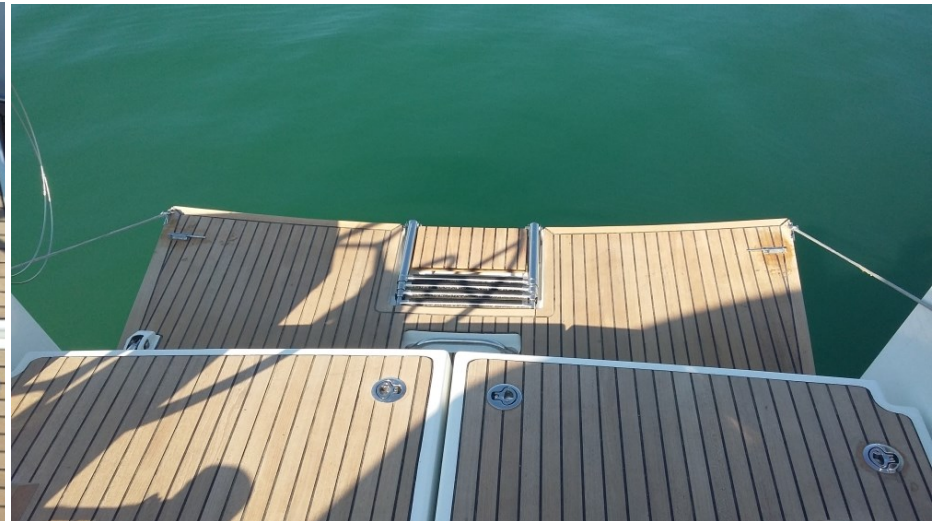
INCLUDES:

- EXTENDING COAMINGS CONVERTIBLE INTO LOUNGING AREA
- STARBOARD INFILL CUSHION FOR L-SEATING AREA - TAUPE
- CUSHIONS FOR COCKPIT AND SUNBATHING AREAS - TAUPE
- LIFELINES' CUSHIONS - TAUPE

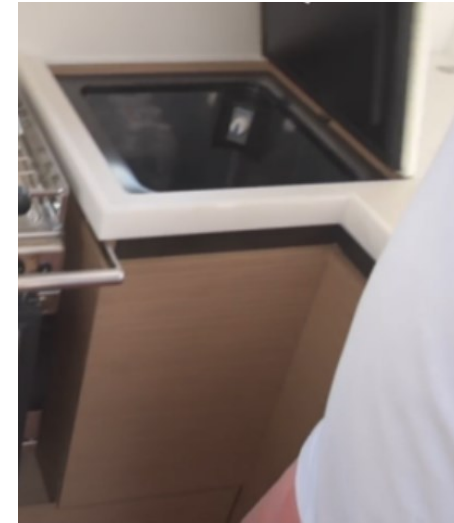


Colour: TAUPE

- COCKPIT FLOOR & SWIM PLATFORM IN TEAK
- SIDE DECKS IN TEAK
- COCKPIT TABLE IN TEAK



- **ELECTRIC WINCH ON COACHROOF (PORT SIDE)**
- **RETRACTABLE BOW THRUSTER**
- **12V/TWIN USB PLUGS IN CABINS & SALOON**
- **ADDITIONAL 35L FRIDGE/FREEZER IN THE GALLEY**
- **SHADES & SCREENS FOR ALL HATCHES IN SALOON & CABINS**



Shades and screens for hatches in the saloon



ENTERTAINMENT AUDIO PACKAGE

RA70N Fusion player
(Radio / USB / Bluetooth...)
at the chart table



Bose® speakers in the saloon +
Bose® subwoofer under settee

Speakers in the cockpit



CHARTER INVENTORY FOR SO 440 - S/Y: *Finesse*

GALLEY EQUIPMENT

- **COLLECTION: 'Welcome on board' - MARINE BUSINESS, SPAIN**



WELCOME ON BOARD

Welcome on board with design and convenience.

Tableware created for life on board. Pieces with non-slip bases, manufactured in unbreakable high quality melamine, dishwasher safe. This line is slightly heavier, making it more solid with a higher resistance to falls and dents.

Plates, bowls, jars and salad bowls in TWO TONE (Grey and blue) with an exclusive nautical look. Glasses and cups in Tritan™ are also non-slip, enabling more safety aboard.

- 8 X WINE CUPS TRITAN™ NON SLIP
- 10 X WATER GLASSES TRITAN™ NON SLIP
- 10 X BEVERAGE GLASSES TRITAN™ NON SLIP
- 10 X COFFE/TEA MUGS MELAMINE NON SLIP
- 10 X DINNER PLATES MELAMINE NON SLIP
- 10 X SOUP BOWLS MELAMINE NON SLIP
- 6 X DESERT PLATES MELAMINE NON SLIP
- 10 X SERIAL BOWLS MELAMINE NON SLIP
- 10 X PERSONS CUTLERY (4 PCS /PERSON)
- 11 PCS COOKWARE STAINLESS STEEL
- 1 X SALAD BOWL WITH SERVERS MELAMINE
- 1 X RECTANGULAR TRAY MELAMINE NON SLIP
- 1 X SNACKS SET MELAMINE NON SLIP
- 2 X SERVE PLATES MELAMINE NON SLIP
- 4 X WATERPROOF TABLE MATS & NAPKINS
BEIGE/BLEUE STRIPED



MELAMINE NON-SLIP
DINNER PLATE,
WELCOME ON BOARD



MELAMINE NON-SLIP
SOUP DISH, WELCOME
ON BOARD



MELAMINE NON-SLIP
DESSERT PLATE,
WELCOME ON BOARD



MELAMINE NON-SLIP
MUG, WELCOME ON
BOARD

NESPRESSO



PIXIE COFFEE MACHINE



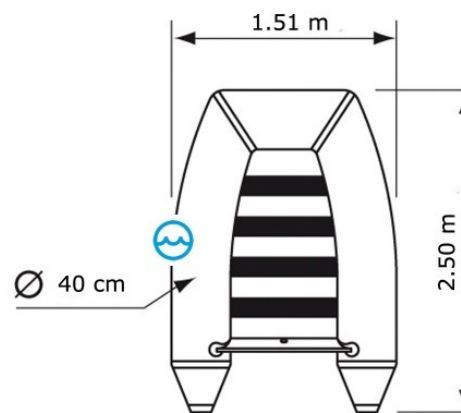


DINGHY

- 2.50m with AIR FLOOR TALAMEX "Comfort line TLA 250"

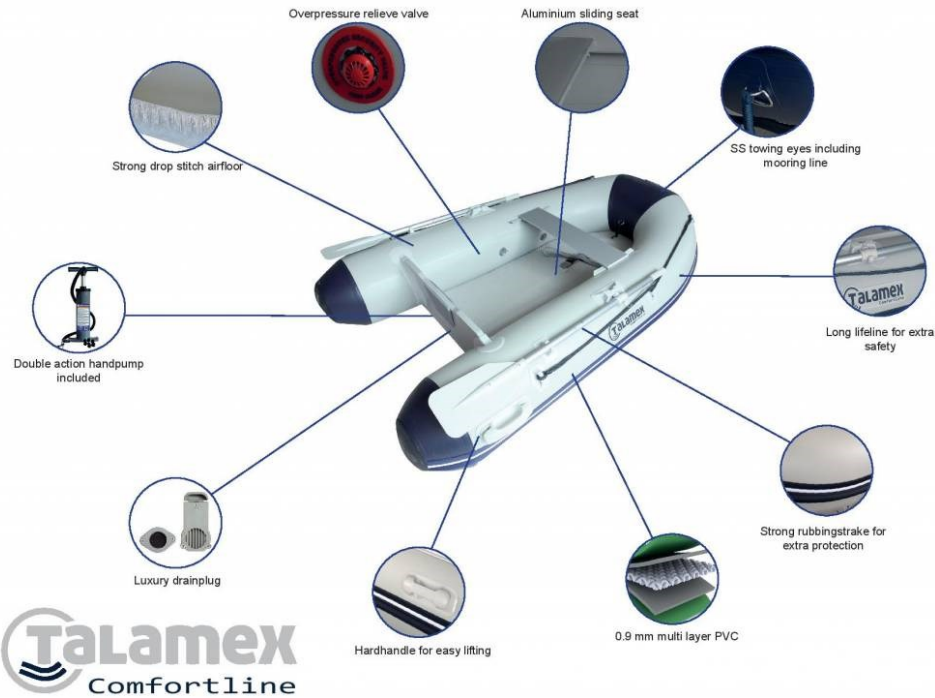
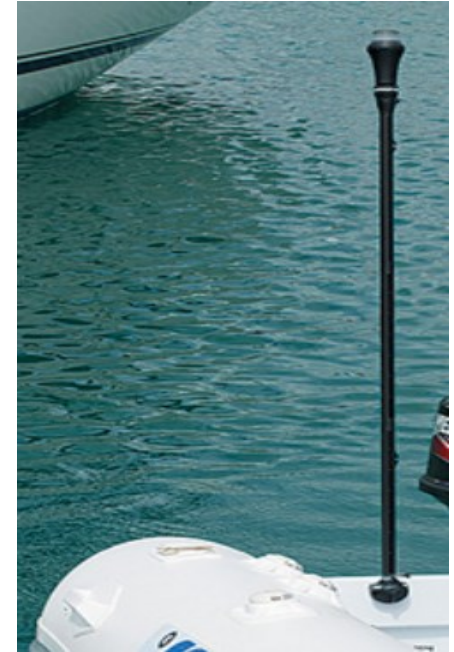
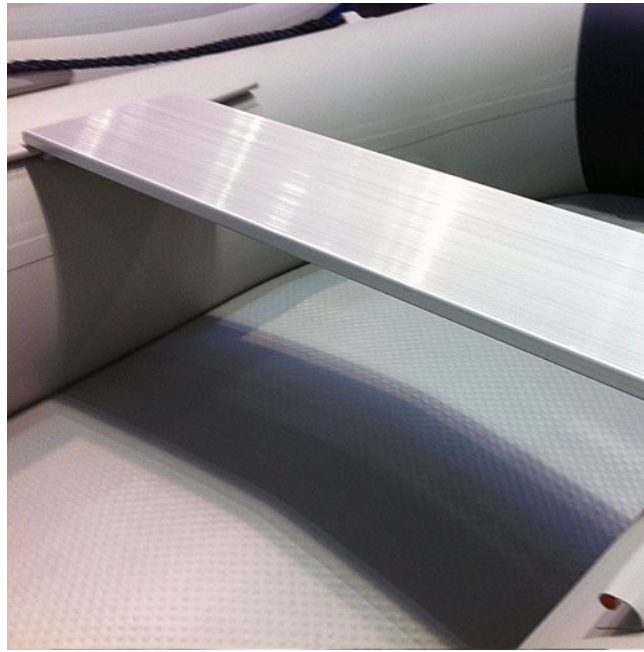


TLA 250



TLA 250





Dinghy Anchor



RAILBLAZA Dinghy Visibility Kit

OUTBOARD

- SUZUKI DF2.5 short tail, 4 stroke



Start system	Manual
Weight in kg	S: 13.5
Engine type	OHV
Fuel system	Carburetor
Amount of cylinders	1
Cylinder capacity in cm³	68
Bore x stroke in mm	48 x 38
Maximum power in kW	1.8
Maximum speed in rpm	5,250-5,750
Choke	Manual
Contents Oil pan in liters	0.3
Fuel tank contents in liters	Integrated 1.0
Gear ratio	2: 15.1
Exhaust system	Exhaust above the propeller

SAFETY

• ADULTS LIFEJACKETS Automatic Inflatable

10x GILET OSPREY VEST 165N AUTO Lifejacket with harness & double crotch strap



Designation: **AUTOMATIC** OSPREY VEST
Color: Blue / gray
Buoyancy: **165N**
Weight: Mini 40 kg
Chest: 55 to 130 cm
Fully lined mesh vest.
Large outside pocket.
Vest very narrow thanks to the bellows.
Very strong and flexible rip stop fabric.
Crotch strap (removable).
Cartridge 33 gr.
UML Prosensor firing pin with 2 indicators to display the status of the cartridge and the trigger.

Weight: 1.13 g

• JUNIOR LIFEJACKETS Automatic Inflatable

2 x GILET GONFLABLE JUMPY ENFANT AUTOMATIQUE, with harness & double crotch strap



Designation: JUMPY 150N children's waistcoat
Color: Gray Dolphin
Buoyancy: **150N**
Weight: **18 to 40 kg**
Adapted to the morphology of the child, as safe as an adult model.
Nylon cover with zipper
Belt with quick buckle, double sub-cut
Very comfortable collar with mesh insert.
Automatic UML striker
Regulatory all-round pleasure
Double sub-cut straps
Hanging lanyard in the back
Placement for individual flash lamps
Brand: 4WATER



Weight: 0.84 g



1 x SECUMAR BRAVO PRINT Life Jacket for children / 5-10 kg

This high-quality foam life jacket has been designed especially for children.

- Adjustable waist belt with plastic click
- Front zip with additional securing-strap
- Children safety-belt

Approved
DIN EN ISO 12402-4.
buoyancy / weight:



- **SAFETY LINES**

12 x 4W, 2 HOOK SAFETY LINES



Safety lines approved to EN1095 and use safety action double hooks that prevent accidental opening, yet are simple to operate single handed. This 2.0m line has 2 double action safety hooks, one on each end.

- **SAFETY JACKSTAYS**

2 x Wichard Lyf'Safe Webbing Jack lines with luminescent thread



This adjustable webbing jackstay is made with 25 mm polyester abrasion resistant webbing with a woven reflective thread. Photo luminescent webbing that does not roll under foot. Designed to fit to your strong points with a cow hitch one end and adjustable loop at the other end.

Length: 11 meters. Breaking load: 2 000 kg.



- **LIFERAFT**

SEA-SAFE / 4W, 10 x Persons Liferaft, Greek ISAF-ISO 9650-1, Classic Container

SEA-SAFE / 4W Classique liferaft. ISAF – ISO 9650-1-Group I-TYPE A. With **Greek Yacht Pack** Survival Equipment. Classic offshore life raft for Greek-flagged vessels carrying less than 25 persons. For categories I, II and III Navigation. For Charter and private yachts.

main Features

Offshore sailing of 10 people.

- raft designed and tested in France
- made of natural rubber, soft and very resistant material
- can be launched overboard, with a height not exceeding 6m above water
- Designed for all navigations unless 24h assistance.

The most compact and light of the market.

Persons: 10

Type 1

ISO 9650-1

Dimensions: 750 x 500 x 280 mm

Double bottom

Weight: 48 kg

Container: container



MAN OVERBOARD

- **HORSESHOE BUOY – FLOATING LIGHT – 40m FLOATING LINE**
1 x PLASTIMO Rescue horseshoe buoy orange, with floating light and 40m floating line in **white bag**



Rescue Buoy®

Simple and ingenious, the Plastimo Rescue Buoy represents a simple but major breakthrough in the array of man overboard recovery aids.

The principle is extremely simple : attach permanently a regular horseshoe buoy to a properly coiled lifeline ; when the buoy is thrown, the line pays out quickly, without tangling or fouling.

- Horseshoe lifebuoy, 147 N buoyancy.
- 40 m of yellow floating retrieval line.
- Coated fabric storage bag, impervious to UV-rays, fitted with clips for attachment to pulpit.
- Breaking strain of line : 400 kg.
- Dimensions : height : 60 cm, width : 65 cm, thickness : 14 cm.
- Weight : 2.3 kg without light.



• **Floating light**
57718
Fixed light, without bracket

- **MOB LIFE SLING**

1 x KIM MAN OVERBOARD RESCUE SLING, YELLOW WITH 30m FLOATING LINE



KIM Man Overboard Rescue Sling - Yellow - Consistently voted best on the market by the Yachting magazines, the KIM rescue sling utilizes a helicopter lifting strap with 30m of floating line. Simple instructions printed on both sides of the bag, specially designed for easy fit on to the push pit.



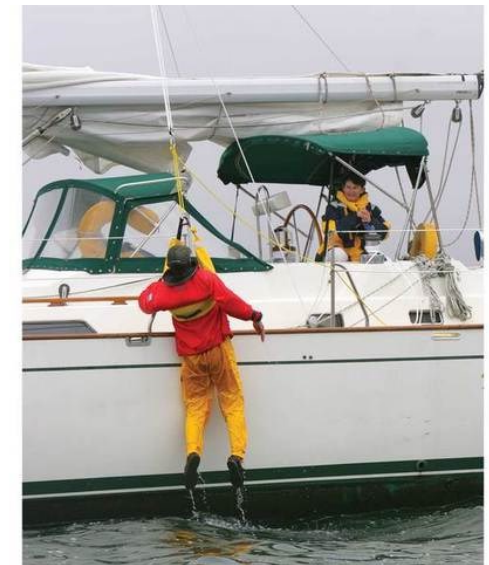
- **MOB SAILBOAT LIFTING TACKLE SYSTEM 3 - 1 Ratio**

1 x LIFESLING 3 TO 1 Hoisting Tackle



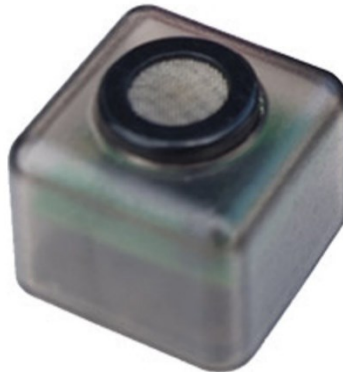
Getting the man back in the boat can be far more difficult, especially if the victim is unconscious. A hoist and tackle system is another option designed to help bring even your beefiest crew aboard safely, even if injured, unconscious, or in atrocious sea conditions. Specially made hoisting tackle with the Lifesling2. Having a dedicated tackle system means you will always have it handy in the event of an emergency.

Custom-made tackle, with the help of a winch, provides the mechanical advantage to hoist someone out of the water. Includes a fiddle block, a single block with carabiner, 65' of 3/8" dacron braid and a nylon storage bag.



GAS DETECTORS

- 3GAS + 12V Gas Alarm Propane, Butane, LPG, Carbon monoxide detector
- 3Gas+ Alarm extra sensor



Peace of mind during your vacation, while sleeping, for you, and your kids.

Very important. Gases are unintentional, dangerous to humans at the time of leakage and faults in equipment, cylinders or pipes.

Besides accidental situations there are gases such as Ether, also increasingly used to make people unconscious for committing robberies.

The 3Gas + Alarm detects all of the following gases:

- ✓ **LPG (both butane / propane)** in the event of accidental leakage of a device, cylinder or pipe.
- ✓ **Carbon monoxide (CO)** – which can be generated by gas-operated equipment, which is not properly ventilated or has insufficient supply of fresh air for the combustion process.
- ✓ **Narcotic “knockout” gases** such as Ether

Because some gases rise and some gases fall, an extra gas alarm sensor is used that is mounted at a different height and position.

MOORING LINES / SPRINGS

- 2 x TALAMEX Luxurious mooring/spring line with 100% polyester jacket with polypropylene core, WHITE / BLACK, ϕ 16mm, length 15m
- 2 x TALAMEX Luxurious mooring/spring line with 100% polyester jacket with polypropylene core, NAVY BLUE, ϕ 16mm, length 15m

Braided polyester / polypropylene mooring lines with high elasticity. Line stays smooth and does not tick.

Equipped with 40cm split eye and hoist at the splits and end of the line.

Coat: Polyester

Core: Polypropylene

Construction: 16-head



- 2 x MEDIUM mooring lines, GLEISTEIN DOCK-FLEX, ANTHRACITE/RED, ϕ 16mm, length 25m

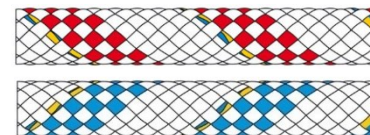


- 2 x LONG mooring lines, 3-strand GLEISTEIN Geo Twist 100% polyester, WHITE, ϕ 16mm, length 50m



OTHER LINES

- 1 x TALAMEX Admiral Polyester line, WHITE/RED, ϕ 12mm, length 12m
- 1 x TALAMEX Admiral Polyester line, WHITE/BLUE, ϕ 12mm, length 12m

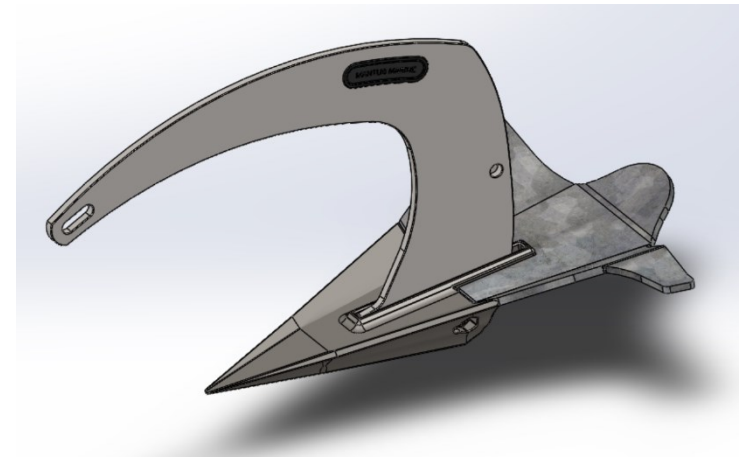
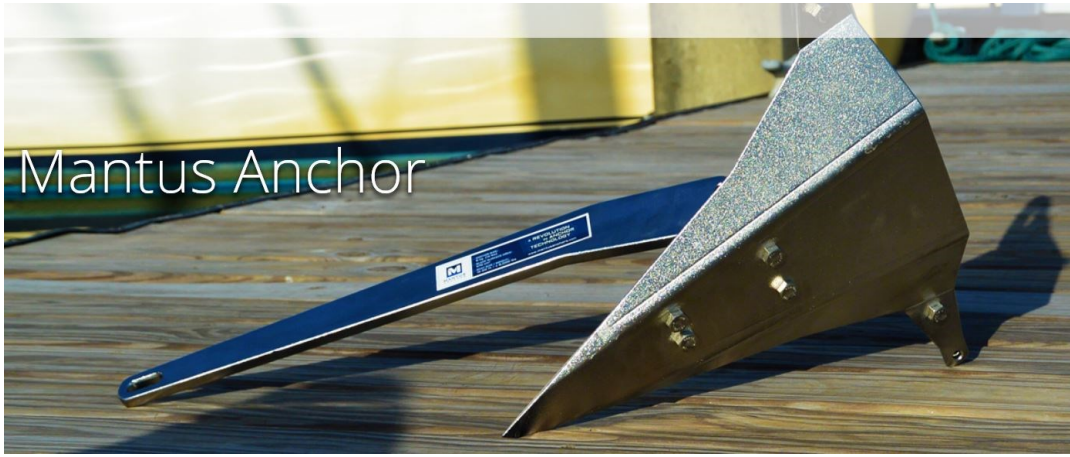


ANCHORING

- 20 Kg Main Anchor, Galvanized Steel – M2 (new) - MANTUS USA
- 11 Kg Stern Anchor, Galvanized Steel - MANTUS USA

DIGS LIKE NO OTHER. *The Mantus Anchor* is designed to penetrate dense grassy bottoms and set with unparalleled holding power.

When tested, *Mantus anchors* set faster and deeper than any other tested anchor, including Rocna, Manson Supreme, Bulwagga, Fortress, Bruce, CQR and Danforth anchors.



- 100m Anchor chain galvanized, calibrated 10x30mm Grade 40, with 5 colors chain markers
- 40m TALAMEX Anchor line polyester braided with lead
- MANTUS Swivel S2 with 316 L Stainless Steel, Precision Cast and Electro-Polished Body



SOLAR PANELS 270 W (2X135W) ON THE BIMINI

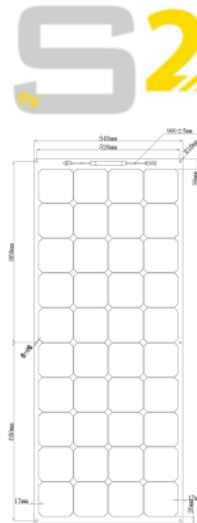
- 2 x FLY SOLARTECH ETFE SEMI FLEXIBLE SOLAR PANELS – SGM-S2-FLY-135W
- 2 X VICTRON SMARTSOLAR CHARGE CONTROLLERS MPPT 75 I 15

Seven-layer technology, anti-reflective **ETFE surface**, designed to have high corrosion resistance and structural strength over a wide temperature range. Excellent chemical, electrical and high-energy radiation resistance properties. Back sheet made of black, **strong and lightweight fiberglass**. **Zip fixing system**, slim space-saving junction box, plus panel characteristics and dimensions tailored to fit on the Bimini. Optimal batteries charging governed by 2 separate Victron SmartSolar charge controllers (1 for each solar panel).



**Fly Solartech ETFE Semi Flexible Solar Panel
Model SGM-S2-FLY-135W**

Parameter	Value
Solar cell	Sunpower solar cell A grade
Cell size (mm)	125*125
Cells per module	4*10
Module size (mm)	1330*540*3
Power tolerance	±3%
Nominal peak power (WP)	135W
Nominal voltage (V)	23.2
Nominal current (A)	5.97
Open circuit voltage (Voc)	27.39
Short circuit current (Isc)	6.32
Cell conversion efficiency	22.60%
Module conversion efficiency	18.80%
Operating temperature	-40 to +85°C
Max system voltage	1000V DC
Certification	CE, ROHS

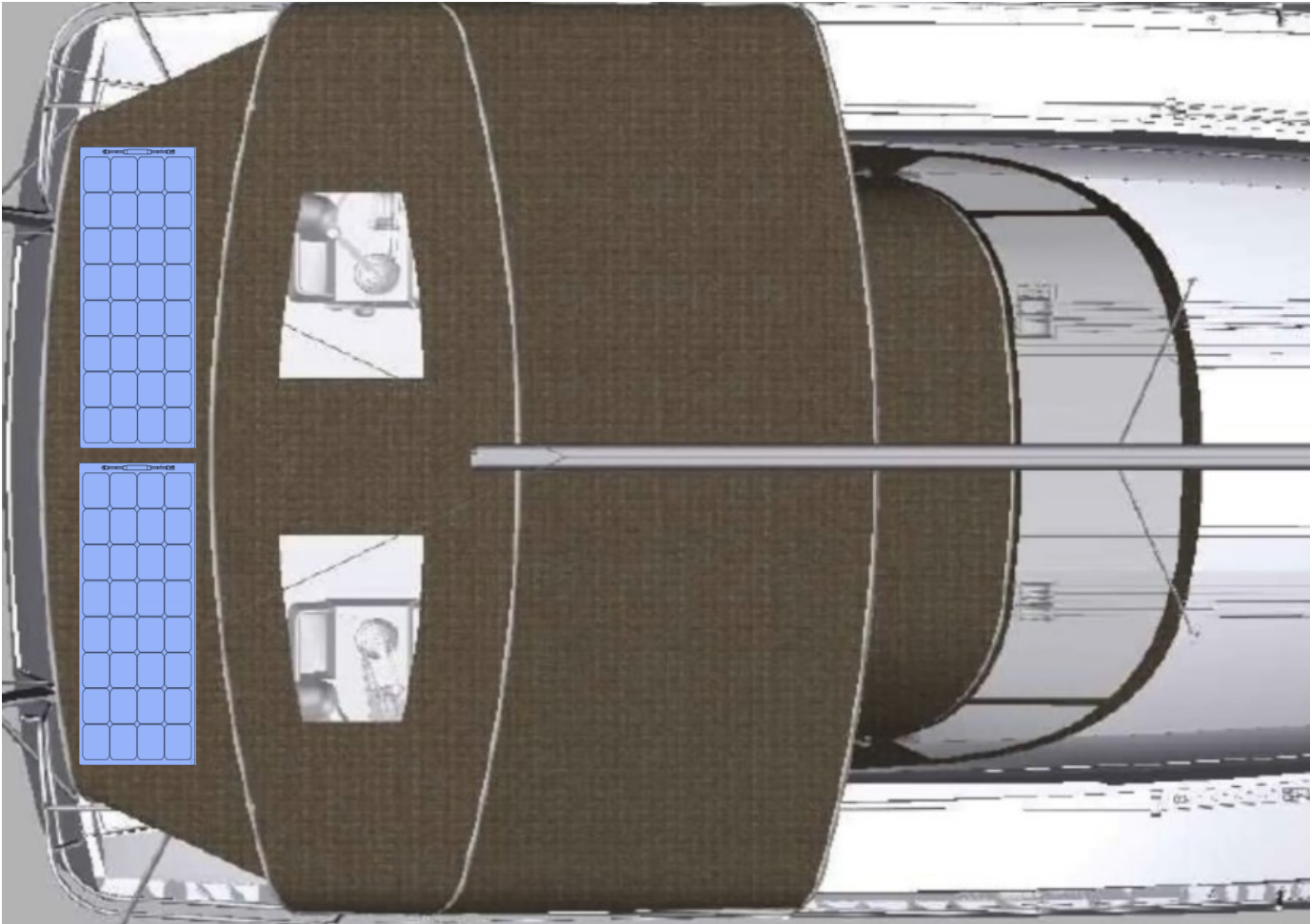


Victron SmartSolar MPPT 75/15



BIMINI TOP

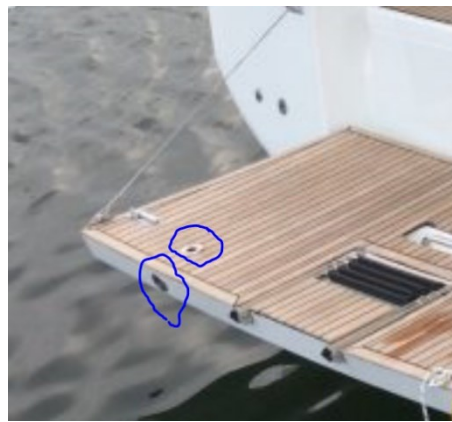
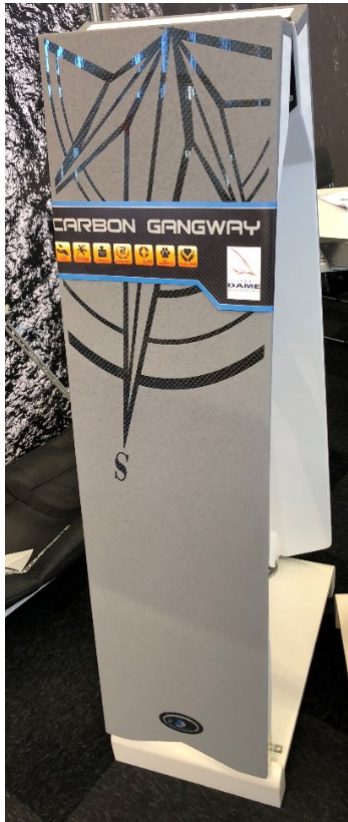
- BIMINI SUNBRELLA PLUS, Colour TAUPE (2x Solar Panels on top, placed aft)



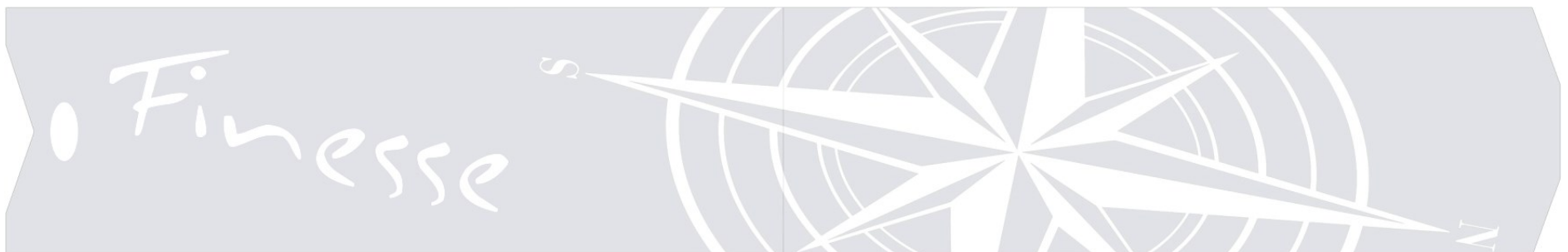
Colour: TAUPE

GANGWAY

- FULL CARBON Gangway, FOLDABLE, 260x35cm, 8kg, LIGHT GREY/WHITE (GS Composite, Slovenia)
- Carbon Trapeze with lifting rope
- Storage bag



Female fittings for the attachment points in blue



FENDERS

- 6x POLYFORM NORWAY Cylindrical Fenders F-3 ($\phi 220\text{mm}$, $l=745\text{mm}$)
- 4x POLYFORM NORWAY Cylindrical Fenders F-5 ($\phi 290\text{mm}$, $l=775\text{mm}$)



- 1x OCEAN MATCH 80 STERN FENDER / SWIM PLATFORM (750mmx900mm)



SHORE POWER CABLES & ADAPTERS

- **VICTRON CEE Extension cable 25m, 16A / 250Vac (3x2,5mm²)**
Cable complete with IP56 waterproof plug and socket
LED indicator for voltage presence.
Protection caps



- **VICTRON Adapter 16Amp / 250V CEE / Schuko**



- **VICTRON 32Amp 3 Phase to Single Phase Adapter**

